



# access statement

Canal and River Tours Stratford upon Avon

This access statement does not contain personal opinions as to our suitability for those with access needs, but aims to accurately describe the facilities and services that we offer all our visitors.

## Contents

Introduction.....	2
Boarding the Jennifer May.....	3
On Board Facilities .....	4
Catering.....	6
Getting Here.....	7
By car .....	7
Car parks .....	7
Disabled parking .....	7
Park and Ride .....	7
By train.....	7
By bus or coach.....	7
By air.....	7
Contact Us.....	8



## Introduction

Canal and River Tours Limited is a new family business based in Stratford upon Avon which offers an entirely new experience to visitors to the town, taking passengers through the historic canal lock at Stratford before embarking on a skilfully acted audio tour of the river and its attractions. This premier river attraction was inspired by school trip in the mid 1970's after the Queen Mother opened the navigation.

The passenger boat 'Jennifer May' has been designed and purpose built to be the safest, most versatile and accessible boat of its class in the UK, operating in both a canal and river environment. It is the only sightseeing passenger boat licensed to operate on both the Stratford Canal and River Avon.

Uniquely, this boat has large glass roof sections that provide unrivalled viewing from anywhere inside the heated cabin space. This gives passengers the exciting sensation of the boat rising from river level as the lock is operated. On board is a large WC with baby changing facilities, disabled access and a large hydraulic platform lift. The boat is also an excellent conference or meeting venue with phone charging points, wifi, display equipment, flip charts and whiteboard.

The professionally written and narrated commentary gives a tongue in cheek account of our town history, industrial heritage, river wildlife and William Shakespeare on the 45 minute tours that depart regularly every day from Feb to Dec. A free multilingual app is available as a text version of the audio tour in 8 different languages including 2 versions of Chinese.



## Boarding the Jennifer May

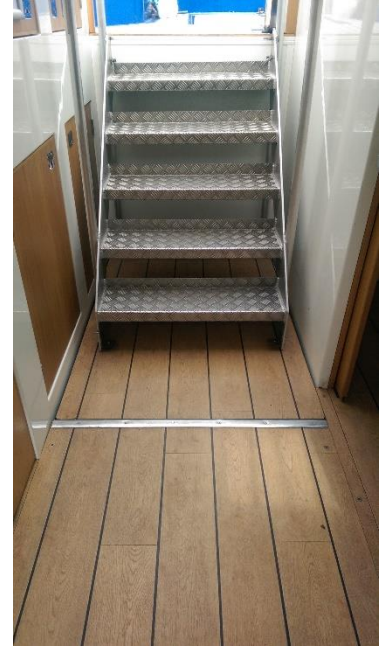
Canal and River Tours are committed to making everyone's trip through the historic basin and locks as enjoyable as possible so this modern, purpose built boat has good access for passengers with physical disabilities and a configurable deck.

- The access to the boat is easy and we regularly take parties. Tickets can either be bought on-line in advance via our website or from the Ice Cream boat at the entrance to the canal basin by the bridge or on board the Jennifer May itself for ad hoc trips of smaller parties.

- Canal and River Tours welcome all well behaved dogs to ride with their owners on the Jennifer May

- The entrance to the boat has an open width of 950 mm. There is a step up on to the boat from the mooring which is 250mm high. There are 5 steps of 190mm to descend into the passenger deck with railings on either side.

- The boat is also fully adapted for wheelchair passengers and the crew will always be happy to help anyone unable to use the steps. There is a lift with a square area of 1470 mm x 950 which can carry a wheelchair and a standing adult There is a gang plank with a non-slip surface—just ask for assistance.



Images showing the gangplank and lift





## On Board Facilities

- Canal and River Tours is particularly proud of the specially designed accessible deck which is fully configurable, with removal seating and capable of holding up to 50 passengers in wheel chairs.

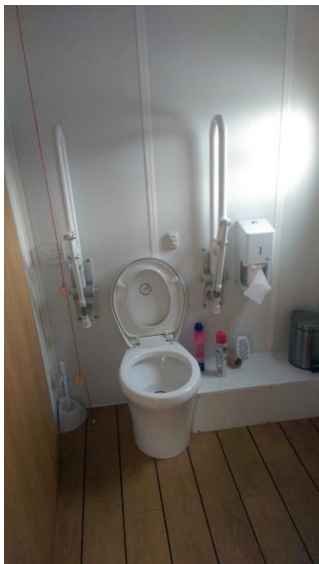
Images of Different deck configurations:



- The highly configurable deck is ideally suited as a conference or meeting venue with catering, LCD display equipment, flip chart, white boards, Wifi and phone and laptop charging points. Stratford is also an excellent place for your team to stay overnight, with a range of hotels and historic pubs, not to mention the theatre.



- The on-board toilet facilities cater for wheelchair users and there are also baby changing facilities



## Catering

- Passengers are welcome to bring their own packed lunches on board the Jennifer May to enjoy whilst cruising up and down the river.
- There are also several unique and imaginative food outlets within the Canal basin area where freshly baked baguettes, locally sourced ice cream and soft drink and bespoke coffee blends can be purchased.



- Packed picnic lunches can also be provided for parties with advance notice by using the contact details at the end of this document



## Getting Here

### By car

Stratford-upon-Avon is a short drive from Junction 15 of the M40, giving good access to the M42, M5, M6 and M25. Our postcode is CV37 6BB.

### Car parks

There is a large choice of fee-charging **car parks** in Stratford-upon-Avon.

### Disabled parking

There are seven on Waterside directly outside the Royal Shakespeare Theatre and ten bays on Chapel Lane, the road opposite the Swan Theatre. These spaces are available on a first come, first served basis. Southern Lane also has on-road parking for blue badge holders; the ten parking bays at the side and rear of The Courtyard Theatre are still available. There is a car drop off point directly outside the Royal Shakespeare Theatre and a coach drop off point just past the Swan Theatre.

### Park and Ride

Stratford's **Park and Ride** service runs daily from 7.30am (from 10 am Sunday). The last Park and Ride bus leaves Bridge Street at 11.15pm, Mondays to Saturdays. Show your RSC theatre tickets or email confirmation for a discounted Maxi Family Ticket (2 adults and up to 4 children) – only £2 (all day).

### By train

You can travel directly to Stratford-upon-Avon train station from **Birmingham** (Snow Hill or Moor Street stations). Last train back to Birmingham, Monday – Friday, at 11.30pm. The last train back to London, Monday – Friday, is at 11.15pm.

For National Rail Enquiries, call 08457 484950.

### By bus or coach

For details of local bus services from Birmingham to Stratford-upon-Avon please ring 0870 608 2608. For local bus services from Oxford call 08705 808 080.

For national enquiries, call 08705 808 080 or visit **National Express Coaches**.

### By air

Stratford-upon-Avon is 27 miles from **Birmingham Airport** and 60 miles from East Midlands Airport. It is also convenient for Luton, Heathrow and Gatwick Airports to the south.

Information is available from the RSC Box Office on 0844 800 1114 (calls cost 5p per minute from a BT landline).







## Contact Us.

### Postal Address;

Canal and River Tours Limited,  
Canal Basin, Bancroft Gardens, Waterside, Stratford upon Avon,  
Warwickshire, CV37 6AT.

Email; [info@canalandrivertours.com](mailto:info@canalandrivertours.com)

Telephone; 01789 295173

